

Table 1-1. Specifications

**PLUG-INS**

Accepts Model 8550-series IF and RF Section spectrum analyzer plug-ins without the use of a center divider shield.

Also, accepts all HP Model 1400-series plug-ins. All plug-ins operate directly into the horizontal and vertical deflection plates. Center shield may be removed to provide double-sized compartment for use with a single, dual axis Model 1400-series unit.

**CATHODE-RAY TUBE**

Type:  
 Post-accelerator storage tube; 9000V accelerating potential; aluminized P31 phosphor; etched safety glass face plate.

Graticule:  
 8 x 10 divisions (approx. 7.1 x 8.9 cm) parallax-free internal graticule. Subdivisions of 0.2 div per major division on major horizontal and vertical axes.

Intensity Modulation:  
 AC coupled, +20 volt pulse will blank trace of normal intensity; input terminals on rear panel.

**PERSISTENCE**

Conventional:  
 Natural persistence of P31 phosphor (about 40 usec).

Variable:  
 STANDARD Writing Speed Mode: Continuously variable from less than 0.2 second to more than one minute.

**ERASE**

Manual or optional remote (see Section VII options): Erasure takes approximately 350 msec; scope ready to record immediately after erasure.

**WRITING SPEED PHOTOGRAPHIC**

Conventional operation (using a HP Model 197A camera with f/1.9 lens and Polaroid® 3000 speed-film): 100 div/usec.

**WRITING SPEED**

Storage:  
 Standard Mode: greater than 20 div/ms.  
 Fast Mode: greater than 1 div/usec.

**STORAGE TIME**

Standard Writing Speed: more than two hours at reduced brightness (typically four hours). Traces may be viewed at maximum brightness for more than one minute.

Fast Writing Speed: traces may be stored at reduced brightness for more than 15 minutes (typically 30 minutes) or stored at maximum brightness for more than 15 seconds.

Brightness:  
 100 foot-lamberts in standard mode.

**CALIBRATOR**

Type:  
 Line-frequency rectangular signal, approximately 0.5 usec rise time.

Voltage:  
 Two outputs: 1 volt and 10 volts peak-to-peak ±1% from 15°C to 35°C, ±3% from 0°C to 55°C.

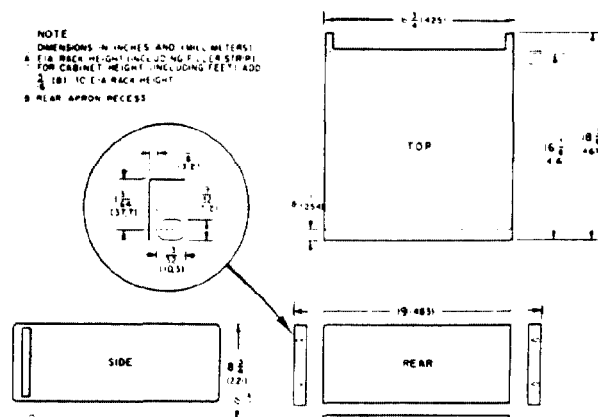
**BEAM FINDER**

Pressing BEAM FINDER pushbutton brings trace on screen regardless of setting of horizontal, or vertical position controls.

**GENERAL**

Power Requirements:  
 100, 120, 220 or 240 volts (+5 to -10%), 48 to 66 Hz (Option H16 48 to 440 Hz), normally less than 285 watts (varies with plug-in units).

Dimensions:



Weight:  
 Net, 40 lbs (18 kg) (without plug-ins). Shipping, 51 lbs. (23 kg).